



GROVE HILL HOMEOWNERS' ASSOCIATION • AUBURN, ALABAMA

Neighborhood Alert

Several Grove Hill residents have reported incoming and outgoing mail stolen from their mailboxes. We contacted the Auburn Police to find out what steps we as a neighborhood can take to help eliminate this problem.

Auburn Police said that criminals prey on people with busy lives. As neighbors, we can watch and look for suspicious activity. If you see someone taking mail, make a good identification to include physical description of the person and/or vehicle including a tag number. Be a good witness by identifying the person's gender, race, physical description. Also important to identify is the person's vehicle description to include color, make and tag number. If you notice anyone tampering with the mail or mailbox, please contact the Auburn Police at 501-3100 or you can call 911 if you physically see someone in a criminal activity. We as good neighbors, need to help watch out for each other. If you see something suspicious notify the police immediately.

A Message from the Grove Hill Board President

At the June homeowners board meeting, the board voted unanimously to canvas the neighborhood (beginning July 1) looking for covenant violations. Some residents may find this a little overbearing, however the board feels with declining property values its important to maintain the integrity of the neighborhood by enforcing the covenants. Just a few reminders of obvious violations, 1. Improperly placed satellite dishes, 2. Unmaintained or improperly maintained yards, 3. Garbage cans improperly stored, 4. Fences that border any street should have plants planted along these fences. These are just a few of the obvious violations. I encourage you to read the covenants if you have questions, and make any corrections before the board begins its July canvas. In order for Grove Hill to remain one of Auburn's premier neighborhoods we all have to do our part with our individual properties. Thanks in advance for your cooperation. Should you have questions or need assistance please contact any board member or our property manager.

Thank you,
John Price

Dog Gone Dogs!

Pets and dogs especially can make a wonderful addition to a family. Dogs make terrific companions. They seem to sense when a master is feeling low, and they will eagerly stick a cold nose into your hand or lick your face. Dogs lie faithfully at your feet and rarely talk back, except when trained to do so. A canine pal will go anywhere that you do without complaining. He will still love you when you forget to fill the feed bowl,

continued on page 2



Dog Gone Dogs! *continued from page 1*

fail to pat his head, or fume over a doggy mess. Few friends are as loyal and dedicated as man's best friend. We have many dogs in Grove Hill which are valued members of our families. As responsible pet owners it is essential that we comply with not only our neighborhood covenants but the Auburn Municipal Code as well. The code (www.auburnalabama.org/code) and the covenants both require that a dog owner shall keep his or her dog under restraint at all times. Our covenants state that dogs shall not be allowed to roam unattended within the neighborhood and that all dogs shall be kept and maintained within fenced or walled areas on a lot or dwelling, as approved by the ARC, or otherwise under leash. If you see a dog roaming or lost in the neighborhood, please contact Animal Control at 501-3090. Also remember when walking your dog, please do not allow dogs to "eliminate" on the sidewalk or common areas, carry a "pooper-scooper" to discard waste.



Receive Grove Hill Announcements by Email

The Board would like to keep the residents of Grove Hill informed about current issues and events that might affect the neighborhood. For example, if one of the pools has to be closed or the city is hosting a bike ride or run on Grove Hill Road, or maybe just a "FYI" that is important to Grove Hill residents. Email is undoubtedly the most expedient and inexpensive method that the Association can use to deliver this information. Currently we have email addresses for approximately half of the Grove Hill residents. If you have not received a test email from us, then we do not have your email address in our database. Please send Property Manager, Barbara Arington an email at barbara@grovehillhoa.com so that we can keep our neighbors informed about happenings in our neighborhood.



The Tropical Shaved Kona Ice truck will be servicing the Grove Hill Homeowners' Association on Tuesday evenings. KONA ICE is a franchise business with Chad and Jennifer Vail operating in the Auburn-Opelika area. For parties, festivals, school reward programs, fund raisers, and other events contact them at 334-750-3528 or 334-485-3443. KONA Brings the Party to You!"



Tip Top

Lawn Care & Repair Service

- Lawn Aeration & Top Dressing
- Mowing, Edging & Trimming
- Small engine repair and maintenance—on site service available
- Mower blade sharpening & reel grinding
- Boat, PWC & golf cart repair and maintenance
- 26 years of turf-care & mechanic experience

Brian Briggs
 Phone: 334-740-4900
 Email: koachbirdy@charter.net

Grove Hill Group Travel Club

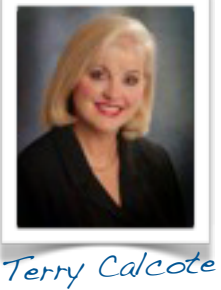
There are so many benefits to life in Grove Hill, and now we have one more! **A group travel club!**

A newcomer to Auburn from Guntersville, Alabama, Terry Calcote moved here following her marriage to Grove Hill resident Dr. Bob Calcote nearly 18 months ago. Says Terry, "I love living in this area, and enjoy the college town atmosphere, but one aspect of my 'former' life that I dearly miss is group travel tour escorting through my work". Terry formerly served as the area marketing director for a Marshall County bank for several years, including heading up a group travel organization sponsored by the bank. "Over many years, I've traveled with customers to Europe, Canada, across the U.S., even enjoying fun day trips to more local areas of interest. I left it behind when I came here, but now that I'm settled in my new surroundings, I'd like to get going again and offer the same travel opportunities, this time to Grove Hill residents! Traveling alone or with family is fun, but group travel allows neighbors and friends to share fun and unusual experiences, and to make lasting memories. Too, group travel affords cost-savings that can't be realized when traveling in

twos. My husband Bob accompanied me on a couple of days trips when he would visit me in North Alabama, and now he can't wait to go again!".

Excursions that Terry wants to plan in the near future include Savannah (with lunch at Paula Deen's

restaurant), the Biltmore Estate in Asheville, N.C., San Antonio's Riverwalk at Christmas (Dec. 5-9), Washington D.C. and the Cherry Blossom Festival in April '09, an Alaska land/sea trip in '09, and of course, day-trips to The Fox Theatre in Atlanta (anyone want to see "OKLAHOMA!" in July??), Birmingham, and other locales. The element of surprise is a "signature" of Terry's trips, as evidenced by recent outings that she has coordinated for the Opelika-Auburn Newcomers Club. "Last month's guided tour of Auburn University was topped off by a secretly arranged visit with Aubie! Everyone wanted a picture! At Christmas, we took a trip to Montgomery to tour the Governor's Mansion and the Capitol. As a surprise for our group, Gov. Riley was there to personally greet each member, complete with posing for a photograph!".



If you're interested in meeting Terry and Bob for more information about Grove Hill Travel Club, you're invited to a **"Let's GO!" Preview Party at the Grove Hill Clubhouse on Tuesday, June 24th at 7:00 P.M.** We'll present an itinerary for the San Antonio trip, as well as upcoming day trips. Grove Hill residents' friends and adult family members are welcome to join in on the fun....the more, the merrier! Our group travel is open to adults who enjoy seeing new places and having new experiences (typically age 40 and above, but we won't check I.D.!). Refreshments will be served. Contact Terry at 826-7829 if you plan to come. If you have destination ideas that you'd like to share, call Terry and we'll make plans to go! Meanwhile, if you want to learn more about the San Antonio trip, send your mail or e-mail address to 1826 Jacobs Lane, or terrycalcote@hotmail.com. and a brochure will be sent to you immediately.



San Antonio, Texas

Signs of Progress

Hopefully everyone has noticed the new street/stop signs throughout the neighborhood.

These signs definitely add to our curb appeal and overall appearance of our neighborhood.

As a Grove Hill resident, your homeowners' dues paid for these signs and we all want to keep them looking new for as long as possible. Signs and posters are prohibited from being posted on utility poles or traffic signs anywhere in the City of Auburn. Plus, the tape will damage the finish on both the signage and the posts. Please use temporary stake type signage when advertising your "Lost Pet", "Yard Sale", or the like. Please remember to remove your signage promptly.

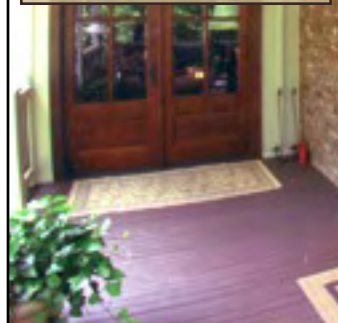


"Our goal has been and continues to be providing our clients with personal, professional and honest effort. If we can assist you with your next project, we'd be honored by your consideration."

New Construction Renovations

- DESIGN/BUILD SOLUTIONS
- ADDITIONS
- COMPLETE RENOVATIONS
- OUTDOOR LIVING
- TERRACES/BASEMENTS
- HOME THEATERS/CELLARS

Ernie Carlson 319.0779
Bob Hix 319.4671



Operation Boot Camp - Don't start summer without it!



- 30-DAY PROGRAM
- CO-ED OUTDOOR FITNESS
- NUTRITIONAL COACHING
- ALL FITNESS LEVELS
- JOIN US IN AUBURN!
- REGISTER TODAY!



Call 888-7-FIT NOW!
www.operationbootcamp.com

Party Plus Rentals



FUN is our Business!

334.749.6419

www.4partyplus.com
cotton candy • sno-cones
trains & much more!

The Area's **LARGEST** Inflatable Selections at the **LOWEST PRICES!**

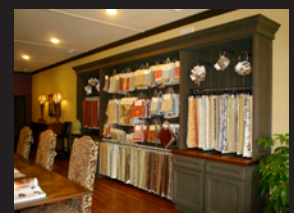
L&M is a full service interior design firm located in Opelika, Alabama. Their talented interior designers work on both residential and commercial projects in the Southeast. They work with individuals, contractors, corporations, and architects in all stages of the design process.



INTERIOR DESIGN

829 S. Railroad Ave. • Downtown Opelika
334.745.7780 • www.lminteriordesign.net

Licensed Interior Designers
Renovation and New Construction



Does Your Fence Comply?

All of the fences in the neighborhood are going to be reviewed by the Board to make sure that each is compliant with the neighborhood's covenants, as part of an overall neighborhood review to be conducted in July. It does not matter if your fence has been installed for two months or two years - all fences must be installed correctly and compliant with the covenants.

Please remember that all exterior portions of the privacy fences must be landscaped to be compliant.

(See fence guidelines listed in the box on the right for more detailed information.)

Furthermore, annual maintenance and inspection of a fence is crucial to its longevity and should be included in a regular home maintenance plan. First year maintenance should include a reapplication of cleaner/brightener that contains a mildewcide, as well as your method of finish (paint, stain, or water sealer). Depending on the location of your fence with regard to direct sun exposure, foliage coverage, etc., it may be sufficient to clean/brighten and re-coat every two years.

For most Grove Hill residents the single largest investment we have is our home and the homes in Grove Hill have steadily increased in value over the past few years. As our neighborhood ages, let us all do our part to help keep our property values up and do the maintenance items such as fences, mailboxes and yard upkeep.

Billy Cleveland, Co-Developer of our neighborhood would like to remind all residents that the golf course at Moore's Mill Club should not be used for non-golf activities, such as walking, running or biking during its hours of operation. The course is open every day except Monday, beginning at 7:00 a.m.



FENCE GUIDELINES

Please see Page 21 Section 6.09 of the Declaration of Covenants, Conditions and Restrictions for Grove Hill.

The following are in addition to all preexisting covenants.

(a) All fence plans must be approved by the ARC prior to construction. After construction all fences must be inspected and a letter of approval provided to the property owner.

(b) No privacy fences greater than a height of six feet may be erected.

(c) All privacy fences erected must be neighbor friendly or have double façade unless otherwise approved. No vertical or horizontal supports may be visible from the outermost aspect of the property. All fence tops must be decorative in nature.

(d) All privacy fences must have at least 6" x 6" corner posts.

(e) All wooden privacy fences must be landscaped with evergreen shrubs that are spaced no greater than four feet apart (unless otherwise approved) and will obtain a height of no less than four feet. All exterior portions of the privacy fence must be landscaped.

(f) Black chain length fences are acceptable in areas approved by the ARC. No black chain length may be visible from the front of the property or along Grove Hill Road. All chain length fencing must be landscaped.

(g) Grove Hill Phase II Lots 1-96 and Lots 77-106 are only allowed to have a cedar shadowbox fence of not greater than six feet in height.



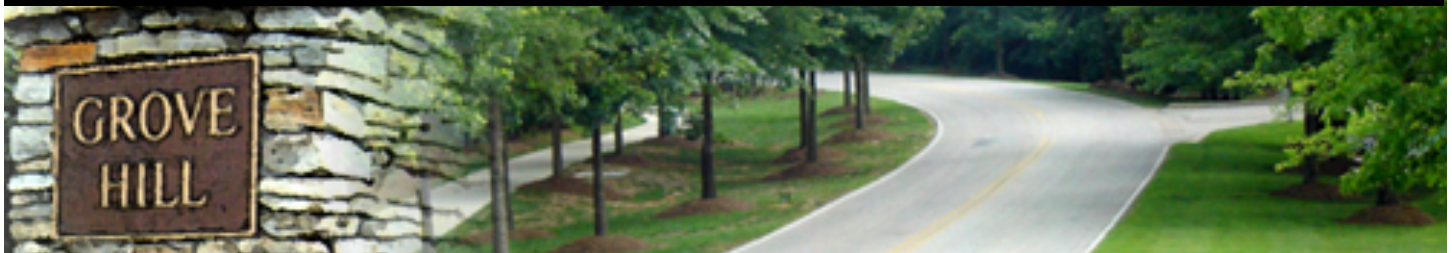
GROVE HILL HOMEOWNERS' ASSOCIATION
P.O. BOX 2658
AUBURN, ALABAMA 36831

GROVE HILL HOMEOWNERS' ASSOCIATION • AUBURN, ALABAMA

www.grovehillhoa.com

THE GROVE HILL GAZETTE

SUMMER 2008



They're Back! Japanese Beetles in Grove Hill

The Japanese beetle, a member of the scarab beetle family, was first reported in North America in 1916. Adults emerge as early as mid May, but more commonly during a 4 to 6 week period from early June through mid July.

Japanese Beetles are very damaging in several ways. They feed on over 275 different kinds of shade and fruit trees, shrubs, flowers, small fruits, garden crops, and weeds throughout the summer. Japanese beetle adults eat flowers and chaff foliage, leaving only a lacy network of leaf veins.

Management of Japanese beetles is at times difficult and other times relatively easy. Correct timing and economical control measures are very important. If you want to control the adult Japanese beetle, the time to do this is when they



are actively feeding on leaves, such as roses and crape myrtles. There are several different insecticides that can be applied to the plant leaf surface to assist in controlling the adult Japanese beetle. Select only one product to apply at a given time. Sevin 50WP or Orthene are recommended for homeowner use on trees and shrubs. The foliage of ornamental plants can be protected by dusting or spraying with one of the following pesticides: •Sevin 50W •Diazinon 25EC •Pyrellin EC

Always read all label directions before applying any pesticides. The plants that the pesticide is labeled for will be listed on the label. Always think safety first and follow all recommendations. *Recommendations for the use of agricultural chemicals are included in this article as a convenience to the reader.*

GROVE HILL HOMEOWNERS' ASSOCIATION • AUBURN, ALABAMA

www.grovehillhoa.com